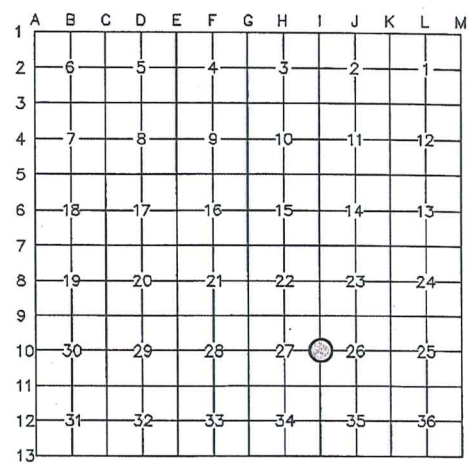


FULTON COUNTY LAND CORNER REFERENCE SHEET

OFFICE OF THE FULTON COUNTY ENGINEER

Section: 26 & 27 Town: 9 South Range: 1 West Corner Code: I-10

Permanent Point # 46



I, Joseph D. Fenicle, PS, in a field survey on **August 29, 2017** do hereby state that the survey monument mentioned has been located and identified. The old witnesses, if available, were checked and if necessary a new monument was brought to the surface. New witnesses have been set where necessary using a 1 1/2 " brass tag stamped "Fulton County", unless indicated otherwise. All information has been researched to the best of my knowledge.

A. Description of original monument and accessories and/or subsequent restoration:

1993 C. Stanley, Office of the Fulton County Engineer. **Stone w/ Horseshoe & Harrow Teeth, Set Railroad Spike**

- [1] SE 33.07' Set 3/4" x 39" Iron Reference Pipe
- [2] SE 103.69' Set Spike in West Side of 18" Walnut
- [3] SW 88.21' Set Spike in Southeast Side of 6" Twin Maple
- [4] W 21.02' Set Track Nail in East Side of Round Wood Anchor Post

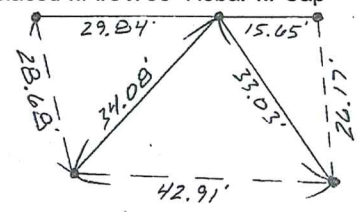
- Stone is 7 1/2" below pavement. Set "x" on Stone. Set PK Nails 3' South & West.

2017 J. Fenicle, PS, Office of the Fulton County Engineer. **Stone, Set Gear over Stone w/ #5 x 4" Rebar w/ Fenicle Cap**

- [5] E 15.65' Set 1/2" x 30" Smooth Shaft Rod
- [1] SE 33.03' Found Badly Bent 3/4" x 39" Iron Pipe. Spun, Pulled and Replaced w/ #5 x 36" Rebar w/ Cap
- [6] SW 34.08' Set #5 x 36" Rebar w/ Fulton County Cap
- [7] W 29.84' Found #5 Rebar w/ Yellow Cap as Set by Brian Wieland

- 26.17' between reference 5 & 1
- 42.91' between reference 1 & 6
- 28.68' between reference 6 & 7

*Joseph D. Fenicle
08-30-2017*



B. State Plane Coordinates ODOT VRS (NAD1983[2011] 2010.0 Epoch), Ohio North Zone (3401), U.S. Survey Feet.

North 731421.317 East 1449615.273

C. Notes This corner is located on Road 28 between Road U.S. 127 and Road N.

August 29, 2017 Joseph D. Fenicle & Aaron D. Dolph excavated this corner. Aaron previously found a Harrow Tooth lying horizontal in the Road. Once removed no other ferrous metal was located. We dug the Stone based on a dimensions off 2 Brian Wieland Surveys in both Fulton and Williams County. We created and intersect with his dimension and his r/w Iron to the West. We found one remaining reference from 1993 but it was badly bent and twisted. We dug a massive hole and were able to spin the mangled Pipe and find a nice location for the intact straight piece going into the ground. We placed a new #5 x 36" Rebar in the same hole w/ a Fulton County Cap and swung that reference missing the intersect by only inches. We then excavated to a depth of 8" when we hit a Blue Stone fitting the dimension (3 1/2" wide x 10" long) as cited by Stanley. The top had grooves cut in it as would be done by a tiller machine for reclamation and no "x" could be found. The base of the Stone was undisturbed. A new drill hole was set in the Stone by holding the remaining reference and intersecting the center of the Stone. This location matched Wieland by inches. We then set a 9 1/2" piece of cast iron hollow gear over the Stone and placed a #5 x 4" piece of rebar w/ an orange plastic cap bearing "Fenicle 8210" in the center of the gear just below the surface of the road. 2 1/2" o/s MAG Nails were also set 2.00' North & West. The bottom of the gear was square and to top was 2 1/2" o.d. while the whole unit was 5" wide. -JDF

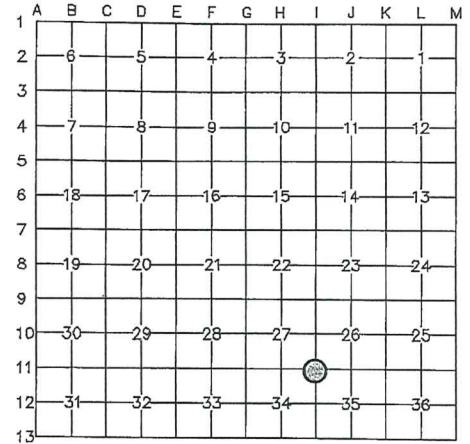
FULTON COUNTY LAND CORNER REFERENCE SHEET

OFFICE OF THE FULTON COUNTY ENGINEER

Section: 26-27 & 34-35 Town: 7 North Range: 4 East Corner Code: I-11

Permanent Point # 13

I, Joseph D. Fenicle, PS, in a field survey on **December 30, 2014** do hereby state that the survey monument mentioned has been located and identified. The old witnesses, if available, were checked and if necessary a new monument was brought to the surface. New witnesses have been set where necessary using a 1 1/2 " brass tag stamped "Fulton County", unless indicated otherwise. All information has been researched to the best of my knowledge.



A. Description of original monument and accessories and/or subsequent restoration:

???? O.U. Griffin, Office of the Fulton County Engineer. **Stone & Brick**

- [1] NE 35.25' Spike in Apple Tree
- [2] NE 47.15' Spike in NW Side of Mulberry Tree
- [3] S 23.10' Iron Anchor Post
- [4] NW 25.78' West Gate Post

???? ?????, Office of the Fulton County Engineer. **Stone & Brick**

- [1] N 21.80' 3/4" Rod in Fence Line to N.
- [2] NE 35.25' Spike in Apple Tree
- [3] NE 47.15' Spike in NW Side Mulberry Tree

*Joseph D. Fenicle
01-06-2015*

2014 J. Fenicle, PS, Office of the Fulton County Engineer. **Stone w/ "x" surrounded by Brick**

- [1] N 16.19' Found 3/4" Rebar
- [2] NE 26.33' Set #5 x 36" Rebar – No Cap @ Random
- [3] SW 20.15' Set Fulton County Tag in North Face of Power Pole
- [4] SW 22.40' Set #5 x 36" Rebar – No Cap @ Random

B. State Plane Coordinates ODOT VRS (NAD1983[2011] 2010.0 Epoch), Ohio North Zone (3401), U.S. Survey Feet.

North 683870.080

East 1453569.846

C. Notes Notes: This corner is located on Road D between Road 26-3 and Henry County Road 22.75.

On December 30, 2014 Joseph D. Fenicle & Aaron D. Dolph excavated this corner. There was no surface evidence and all reliable references were gone. We had an unreliable GPS coordinate from 2002, but the geometry to local surveys made it a good location to start digging. Records were searched in Henry County and Larry Case was consulted but the search for references was futile. We saw cut a 2.0' square box in the location that roughly matched local surveys. We dug thru 6" of asphalt and 6" of large base to heavy undisturbed clay. We dug to 24" and probed to 36" – no evidence found. We probed at a 45 degree angle in all directions and while doing so a small piece of brick was exposed on the North Side of our excavation. Aaron continued to probe and hit the Stone approx. 1.0' North of the North saw cut line. We cut an additional 1.5' x 2.0' to the North and removed the same amount of asphalt and base. At 10 1/2" we found the Stone surrounded with Brick. Once cleaned up and washed there was a prominent "x" on the top of the Stone.

We set 4 Railroad Spikes around the Stone and 2 Golf Balls (Maxfli MD & Titleist 2) and lots more broken brick and ribbon. Reference offset MAG Nails were set 2.00' North and West and the Stone was shot with GPS and referenced.

North Edge of Pavement is 7.0' and the South Edge of Pavement is 9'10".

ORIGINAL DOCUMENT IS ON FILE WITH THE OFFICE OF THE FULTON COUNTY ENGINEER
9120 COUNTY ROAD 14, WAUSEON, OH 43567-9669
JOSEPH D. FENICLE, PS